



2/2-way pressure controlled valve  
**NC - Valve normally closed (as standard)**  
**NO - Valve normally open (as option)**  
**DW - Valve with double acting actuator (as option)**  
 Force-pilot operated piston valve  
 No differential pressure is necessary for operation.  
 In standard (NC) the valve closes with spring power.

■ Valve for clean, gaseous and liquid media

## TECHNICAL SPECIFICATIONS

Type of control	Force-pilot operated, no pressure difference necessary
Design	Piston design
Connection	Flanges DN15 - DN300 EN 1092-1 Form B1/B2
Installation	Preferable with actuator upright
Pressure	0 - 40 bar (see table on page 2)
Medium	Clean, neutral gaseous and liquid media
Max. viscosity	22 mm <sup>2</sup> /s
Temperature range	Medium: -40 °C / +200 °C Environment: -10 °C / +60 °C
Body material	Ductile cast EN-GJS-400-18-LT Cast iron EN-GJL-250 Cast steel GP240 GH Stainless steel 1.4581 / 1.4408
Metallic inner parts	Brass and st. steel
Sealing	NBR, FKM, EPDM, PTFE
Pilot pressure	4 - 10 bar max. pressure range at min. 6 bar
Pilot medium	Clean, neutral gaseous

Pilot valve

**2/131-31-1702-C182**



3/2-way direct operated, NC  
 G1/8, orifice 1.5mm, 0-8 bar  
 Aluminum / Stainless steel / FKM  
 with Cnomo-coil as well as with  
 integrated screw connection for  
 easy assembly

**A7231/1002/....**



3/2-way direct operated, NC  
 G1/8, orifice 1.5mm, 0-8 bar  
 brass / st. steel / FKM

## VALVE FEATURES

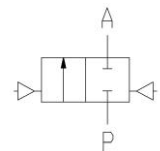
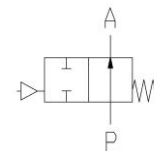
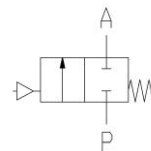
- No pressure difference required
- High life time
- Simple compact valve design
- Reliable and sturdy sealing elements
- Long-term availability of spare parts

## FUNCTION

NC – non  
pressurized  
closed

NO – non  
pressurized open

DW - double  
acting



## CERTIFICATES

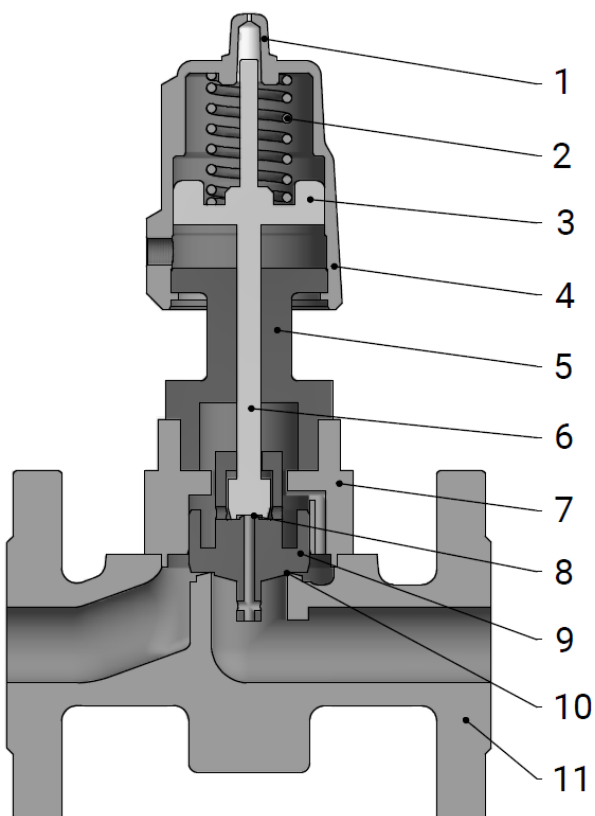


Wolf Process Automation Limited  
 Tel: +353 45 831575  
 Email: info@wpa.ie  
 Web: www.wpa.ie

# TECHNICAL FEATURES

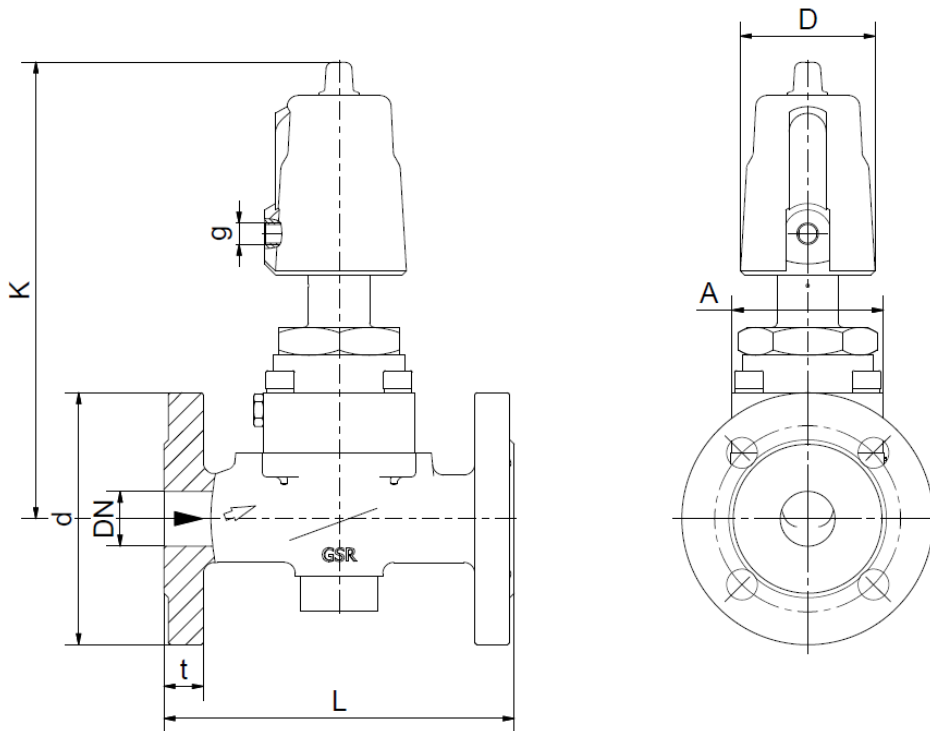
DN	Kv-value m <sup>3</sup> /h	Standard type	max. pressure with actuator		
			7.05	7.08	7.13
15	6,8	.2601/..04/	0-40	-	-
20	8,8	.2602/..04/	0-40	-	-
25	11,5	.2603/..04/	0-40	-	-
32	18,0	.2604/..04/	0-16	0-40	-
40	26,0	.2605/..04/	0-16	0-40	-
50	38,0	.2606/..04/	0-16	0-40	-
65	62,0	.2607/..04/	0-16	0-40	-
80	89,0	.2608/..04/	0-16	0-40	-
100	125,0	.2609/..04/	-	0-40	-
125	265,0	.2610/..04/	-	0-40	-
150	377,0	.2611/..04/	-	0-16	0-40
200	667,0	.2612/0304/	-	0-16	-
250	a.Anfr.	.2613/0304/	-	0-16	-
300	a.Anfr.	.2614/0304/	-	0-16	-

The Kv values in the table apply to the larger drive  
Maximum pressure 0-13 bar with EN-GJL-250 fitting PN16



Description	
1	Position indicator
2	Spring
3	Piston
4	Cylinder
5	Screw joint
6	Spindle
7	Bonnet
8	Pilot seat
9	Piston
10	Valve seat
11	Valve body

# DIMENSIONS



Actuator	7005								
Type	2601	2602	2603	2604	2605	2606	2607	2608	2609
DN	15	20	25	32	40	50	65	80	100
A	48 (44)	70 (69)	70 (69)	98	98	112	215 (180)	245	on req.
d	95	105	115	140	150	165	185	200	220
D	62	62	62	62	62	62	62	62	62
K	220 (215)	223 (220)	225 (220)	245 (230)	250 (235)	240 (240)	285 (265)	290	on req.
L	130	150	160	180	200	230	290	310	350
g	1/8	1/8	1/8	1/8	1/8	1/8	1/8	1/8	1/8
t	16	18	18	18	18	20	22	24	24
kg	4,5 (3,6)	6,0	6,0	10,5 (9,0)	11,0	12,5	23,5 (26)	31,0	on req.

The values in brackets apply to the stainless steel version. (DN15 - DN100)

Actuator	7008								7013
Type	2604	2605	2606	2607	2608	2609	2610	2611	2611
DN	32	40	50	65	80	100	125	150	150
A	98	98	112	215	245	270	235	265	on req.
d	140	150	165	185	200	235	270	300	300
D	94	94	94	94	94	94	94	94	141
K	290 (280)	290 (280)	300 (275)	330 (405)	295	315	350	395	on req.
L	180	200	230	290	310	350	400	480	480
g	1/8	1/8	1/8	1/8	1/8	1/8	1/8	1/8	1/4
t	18	18	20	22	24	24	26	28	28
kg	11,0	11,5	13,5 (12)	25,5 (28)	34,0	48,5	53,5	75,0	on req.

The values in brackets apply to the stainless steel version. (DN15 - DN100)

## INFORMATION

- It is imperative to observe the installation and safety instructions in our operating and service manuals.
- Required ordering information: valve type, function NC/NO, pressure range, connection, nominal width, medium, flow rate, medium and ambient temperatures, connection voltage.
- **For information on the heating and performance of solenoid coils, refer to the corresponding "Coils" data sheet.**
- **Detailed production-specific drawings and other technical information will be made available when an order is placed.**

## PLEASE NOTE

Each individual application decides which valve type is required, the main factor being the resistance of the materials to the operating medium. The correct selection of materials requires knowledge of the concentration, temperature and degree of contamination of the medium. Other criteria include the operating pressure and max. volumetric flow, since, in addition to high temperatures, high pressures and high flow rates must also be taken into account when selecting the materials.

**All materials used for our valves, be it housing, seals or magnets, will be carefully selected in view of the different application areas. Any information given is non-binding and serves for orientation only. No claims under warranty can be derived therefrom.**

## ORDERING CODE

Type	Connection		Body	Sealing		Actuator		Option	
<b>. 2 6</b>	<b>0 9</b>	<b>/</b>	<b>0 4</b>	<b>0 4</b>	<b>/</b>	<b>7 0</b>	<b>0 8</b>	<b>-</b>	<b>X X</b>
01	DN15		03	EN-GJS-400-18-LT		7 .	Closed wo/ press.	HA	manual override
02	DN20		04	EN-GJL-250		8 .	Open wo/ press.	AF	ANSI Flanges
03	DN25		05	GP240 GH		9 .	double-acting		
04	DN32		08	St.steel 1.4408		. 0	Standard-Actuat.		
05	DN40					. 3	Actuat.-St.steel		
06	DN50		01	NBR		. 5	Actuat.nickel-pl.		
07	DN65		02	FKM		. 5	50 mm		
08	DN80		04	PTFE		. 8	80 mm		
09	DN100		06	EPDM		. 3	125 mm		
10	DN125								
11	DN150								
12	DN200								
13	DN250								
14	DN300								



The GSR logo is a registered trademark of GSR Ventiltechnik GmbH & Co. KG

Note: All texts and images are the property of GSR Ventiltechnik GmbH & Co. KG and must not be replicated or modified, not even in part, without written approval

Original products may differ from the product images shown, due to different materials and the like

Subject to error and changes

GSR Ventiltechnik  
GmbH & Co. KG  
Im Meisenfeld 1  
D-32602 Vlotho  
T +49 5228 779-0  
info@ventiltechnik.de  
www.ventiltechnik.de